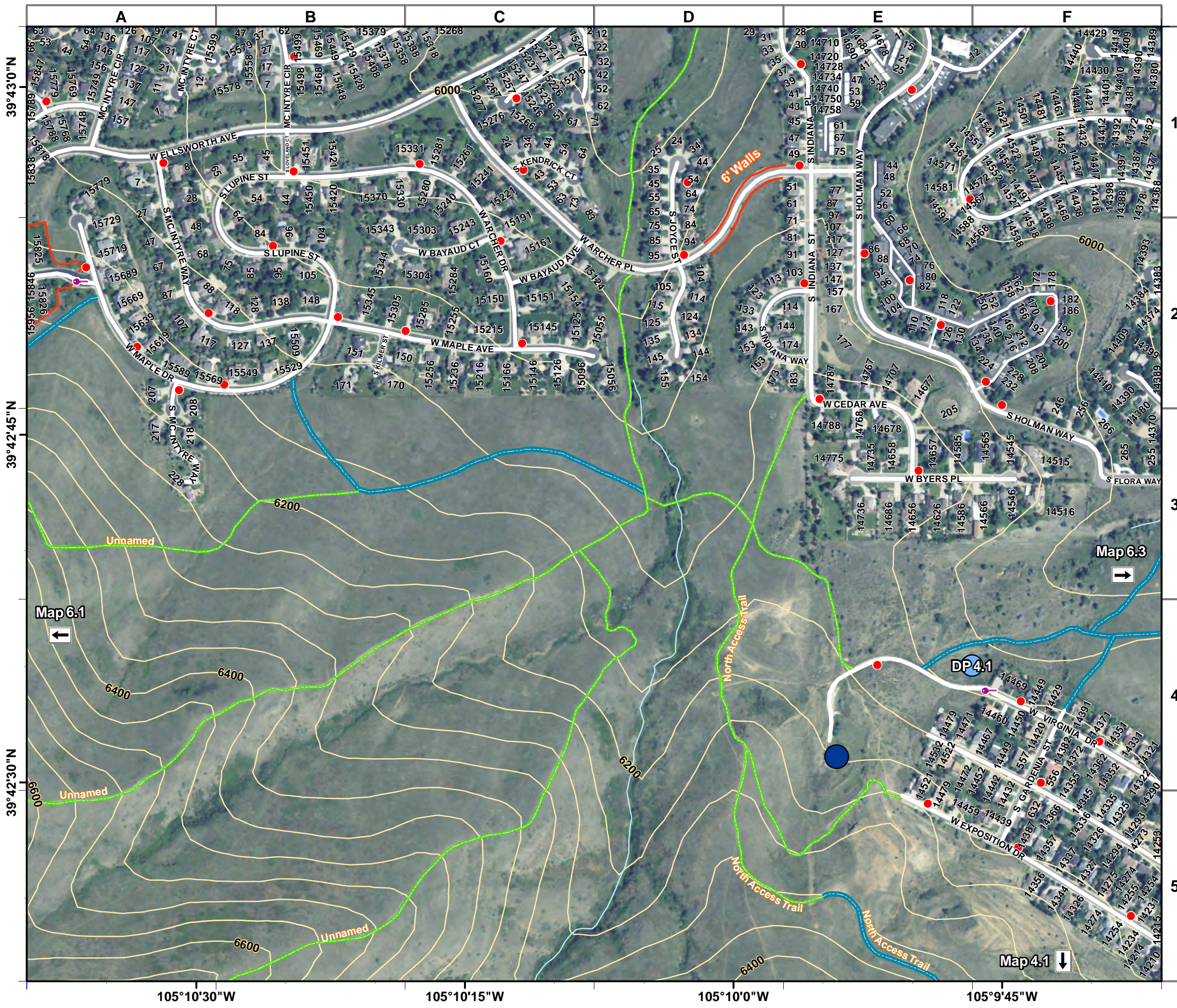


# Tactical Map 6.2



## KNOWN EXPOSURES:

## KNOWN HAZARDS:

**Communications:** Inconsistent repeater coverage on parts of Green Mtn. Consider Simplex, VHF, and/or human repeater(s).

## DROP POINTS/STAGING AREAS

- DP 6.1: Station 6. Check in location.  
Large parking areas at JeffCo Fairgrounds for staging.
- DP 6.2: Estates Park. 16164 W. Ellsworth Drive.
- DP 6.3: Kyffin Elementary. 205 Flora Way.
- DP 6.4: Red Rocks Community College. Large parking areas.
- DP 4.1: West end of W. Virginia Dr. Paved and gravel parking.  
Access to trails.
- DP 4.2: Foothills Elementary. 13165 W. Ohio Ave.
- DP 4.3: Station 4. Check in location.
- DP 4.4: Green Mountain High. Large parking areas.
- DP 4.5: Forsberg Park 15900 W. Alameda Pkwy.  
Large paved and dirt parking.
- DP 4.6: Rooney Road trailhead. Large paved parking.  
Access to Green Mountain dirt road to summit.

DP \_  
DP \_

## NOTES:

Some unmaintained hiking trails may not be marked on map.  
Green Mountain is covered by 5 Tactical Maps: 6.1, 6.2, 6.3, 4.1, and 4.2

Legend	
	Safety Zone
	Staging Area
	Fire station
	Water Source
	Helispot
	Lookout
	Hydrant
	Drop Point
	Water Tank
	Locked gate
	Trail
	Drivable dirt/gravel
	Campground
	Stream/ravine

Miles

1:5,000

Last update:  
3/6/2016

GPS Datum: WGS84  
Contour interval: 40 feet