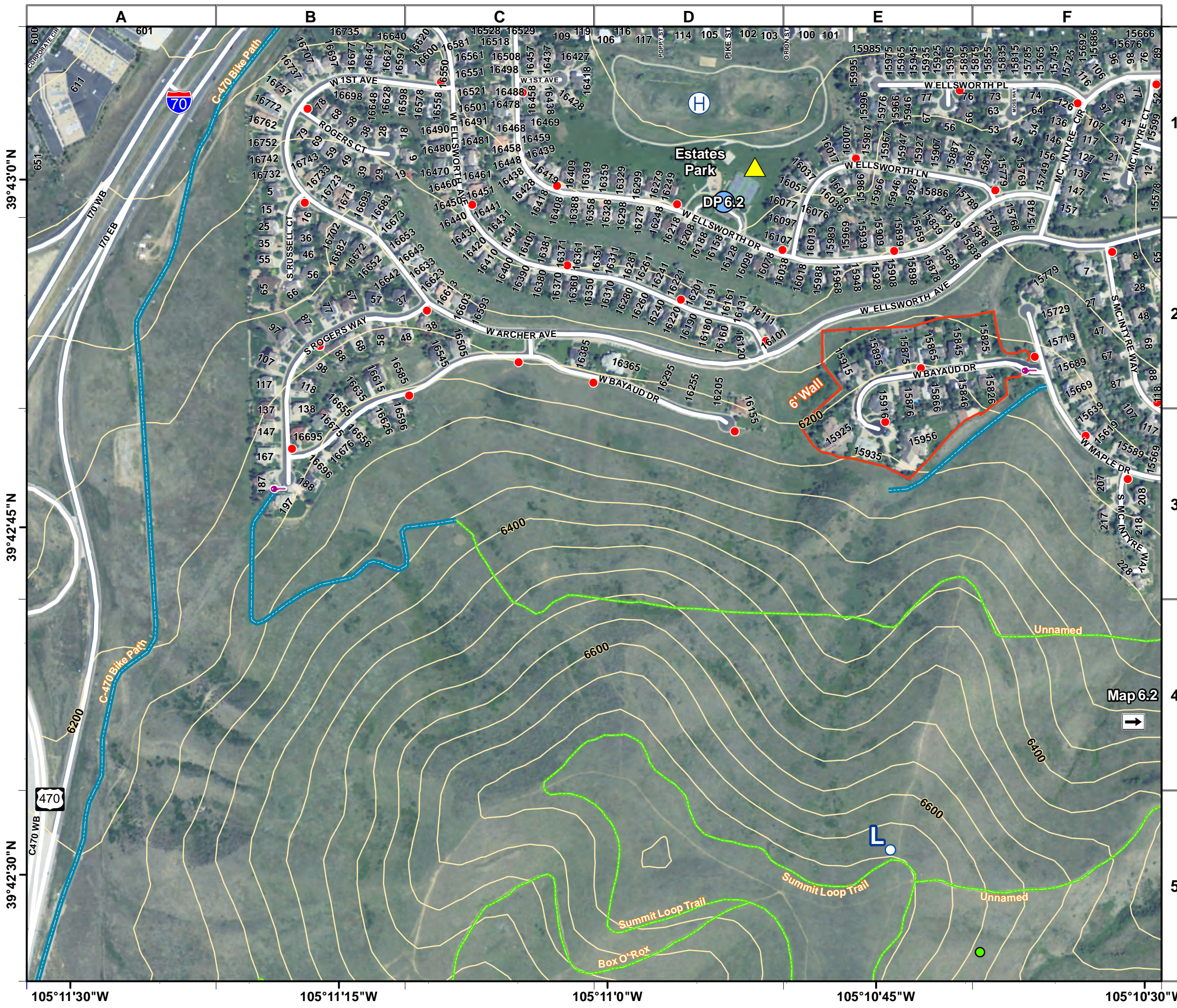


Tactical Map 6.1



KNOWN EXPOSURES:

KNOWN HAZARDS:

Communications: Inconsistent repeater coverage on parts of Green Mtn. Consider Simplex, VHF, and/or human repeater(s).

DROP POINTS/STAGING AREAS

- DP 6.1: Station 6. Check in location. Large parking areas at JeffCo Fairgrounds for staging.
- DP 6.2: Estates Park. 16164 W. Ellsworth Drive.
- DP 6.3: Kyffin Elementary. 205 Flora Way.
- DP 6.4: Red Rocks Community College. Large parking areas.
- DP 4.1: West end of W. Virginia Dr. Paved and gravel parking. Access to trails.
- DP 4.2: Foothills Elementary. 13165 W. Ohio Ave.
- DP 4.3: Station 4. Check in location.
- DP 4.4: Green Mountain High. Large parking areas.
- DP 4.5: Forsberg Park 15900 W. Alameda Pkwy. Large paved and dirt parking.
- DP 4.6: Rooney Road trailhead. Large paved parking. Access to Green Mountain dirt road to summit.

DP ____
DP ____

NOTES:

Some unmaintained hiking trails may not be marked on map.
Green Mountain is covered by 5 Tactical Maps: 6.1, 6.2, 6.3, 4.1, and 4.2

Legend

- | | |
|--------------|----------------------|
| Safety Zone | Drop Point |
| Staging Area | Water Tank |
| Fire station | Locked gate |
| Water Source | Trail |
| Helispot | Drivable dirt/gravel |
| Lookout | Campground |
| Hydrant | Stream/ravine |

North arrow and scale bar (0 to 0.2 Miles).
Scale: 1:5,000
GPS Datum: WGS84
Contour interval: 40 feet
Last update: 3/6/2016